

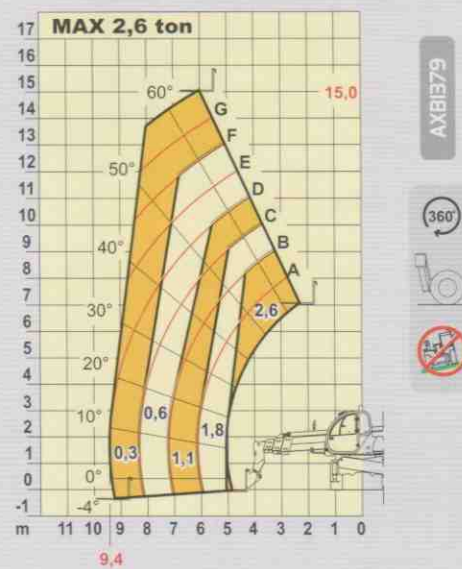
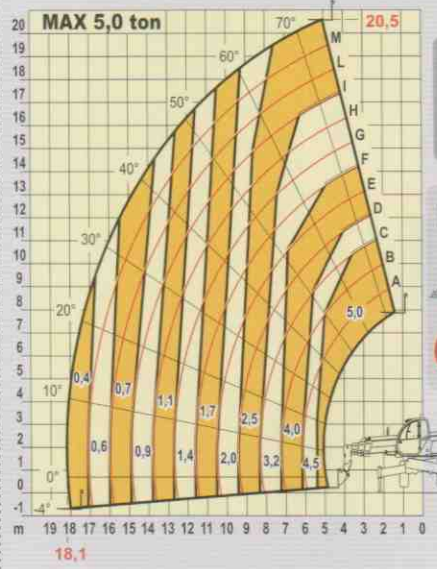
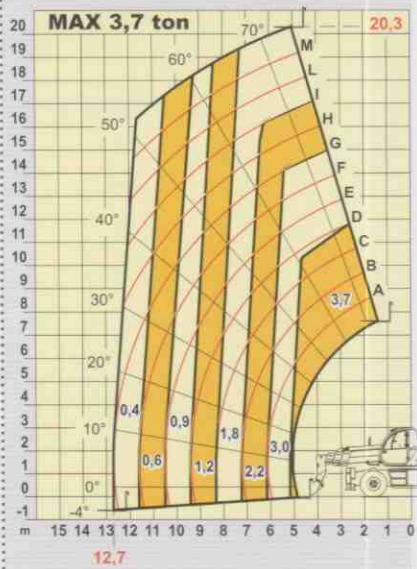
Pegasus

50.21



macchine edili ed agricole
d DIECI
S.r.l.

Pegasus 50.21



PERFORMANCES

Maximum capacity:	5.000 kg
Capacity at maximum height on stabilizers:	2.500 kg
Capacity at maximum height on tyres:	1.800 kg
Capacity at maximum boom extension on stabilizers:	400 kg
Capacity at maximum boom extension on tyres:	400 kg
Maximum lifting height on stabilizers:	20,50 m
Maximum lifting height on tyres:	20,30 m
Maximum horizontal boom extension:	18,10 m
Boom extension at maximum height:	2,50 m
Fork tilting angle:	134°
Tearing force:	5.700 daN
Towing force:	9.400 daN
Maximum allowable slope:	40 %
Total empty weight:	16.900 kg
Max speed:	40 km/h



ENGINE

DEUTZ BF4M2012C - TA - 103 kW ENGINE	
Maximum power:	103 kW (141 cv) a 2500 rpm
Operating principle:	four-stroke, diesel engine
Cylinder number and layout:	4, vertical in line
Displacement:	4038 cm ³ -Turbo compressor aftercooler
Cooling system:	liquid



REFUELLING (litre)

Hydraulic tank:	255
Fuel tank:	126



STANDARD DEVICES

Hydraulic movements with Danfoss proportional control valve.
 Anti-tipping device with block for hazardous movements.
 Continuous turret rotation over 360°.
 Oscillation block on rear axle.
 Hydraulic socket for possible accessories on boom head.
 Closed soundproof FOPS approved driver's cab, with heating.
 Stabilizers.



TYRES

Tyres: 18 - R22,5"



OPTIONAL AND ACCESSORIES

Optional and Accessories: see the relevant catalogue



TRANSMISSION

Transmission: Hydrostatic with variable delivery pump
 Hydraulic engine: with automatic adjustment
 Reversing gear: Electro - hydraulic
 Inching pedal for controlled forward movement
 Servocontrolled 2 speed gearbox



HYDRAULIC SYSTEM

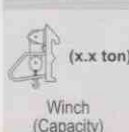
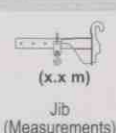
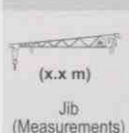
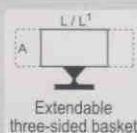
Gear pump with capacity at max speed: 135 lt/1'
 Max working pressure: 230 bar
 Control valve with joystick: 5 in 1 proportional



DIFFERENTIAL AXLES

Steering axes: 2, with planetary reduction gears
 Type of steering: 4 wheels / transversal / 2 wheels
 Front axle: levelling
 Rear axle: oscillating (can be blocked)
 Service brake: oil bath on the 4 wheels with double hydraulic system and servo brake

Negative parking brake.



SYMBOLS KEY



DO NOT maneuver if the machine is NOT levelled

